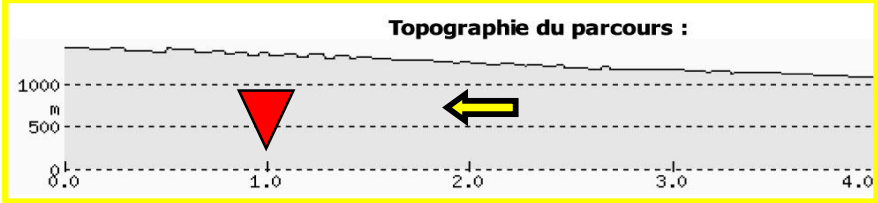
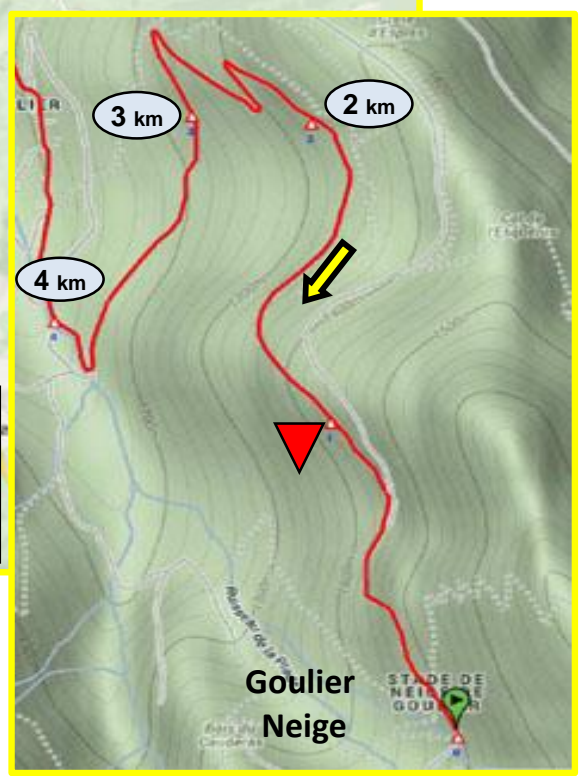
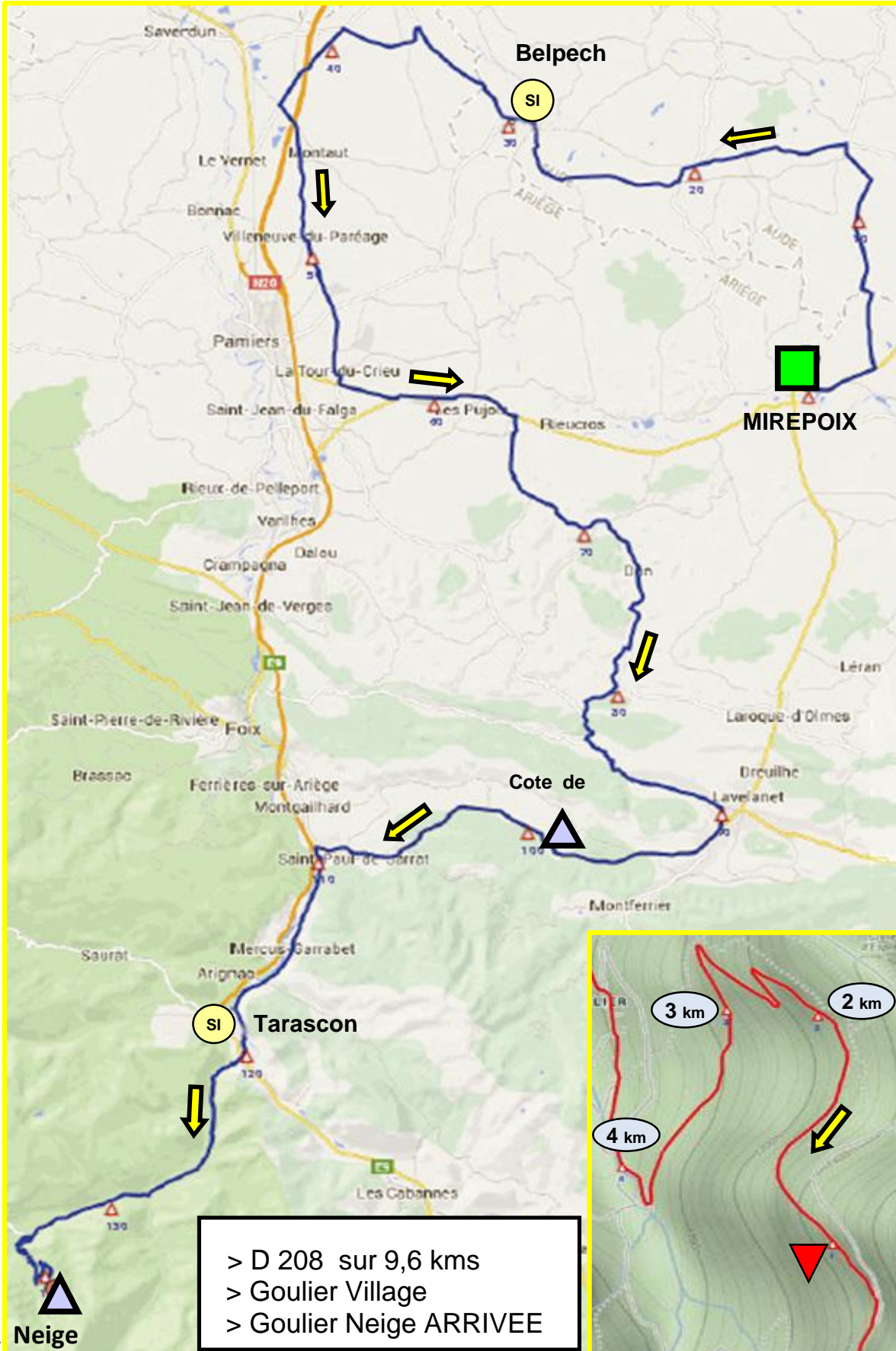


38 ème RONDE DE L'ISARD



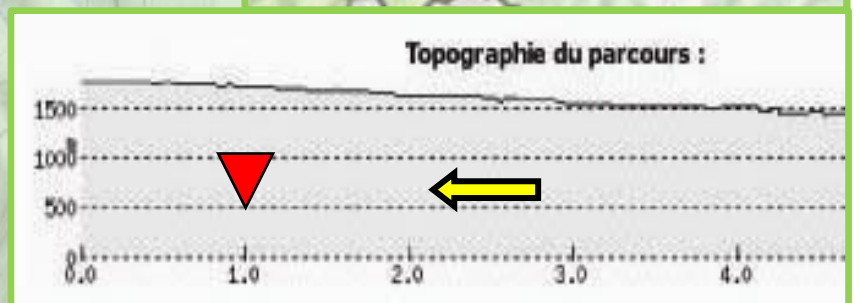
1 ère Etape Jeudi 21 Mai 2015

2
1
0
1
5



38 ème RONDE DE L'ISARD

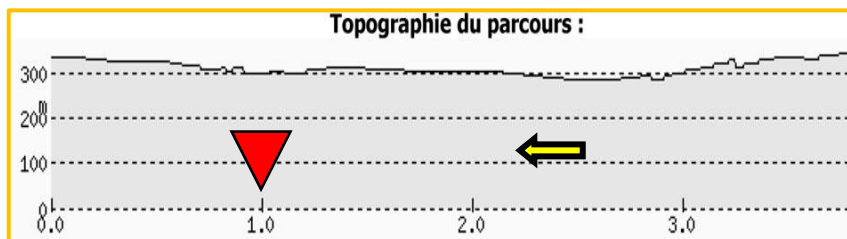
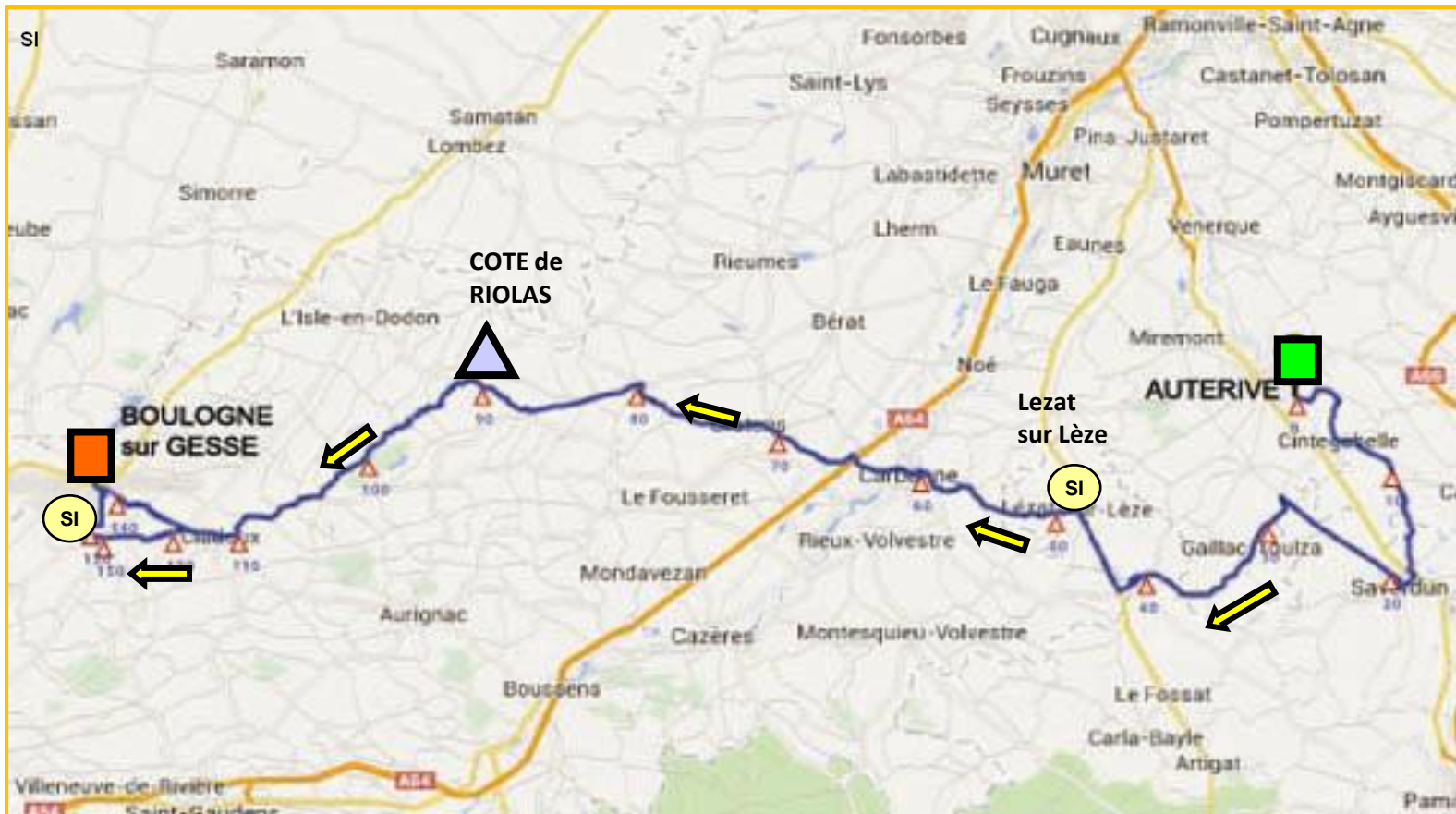
2 ème Etape Vendredi 22 Mai 2015



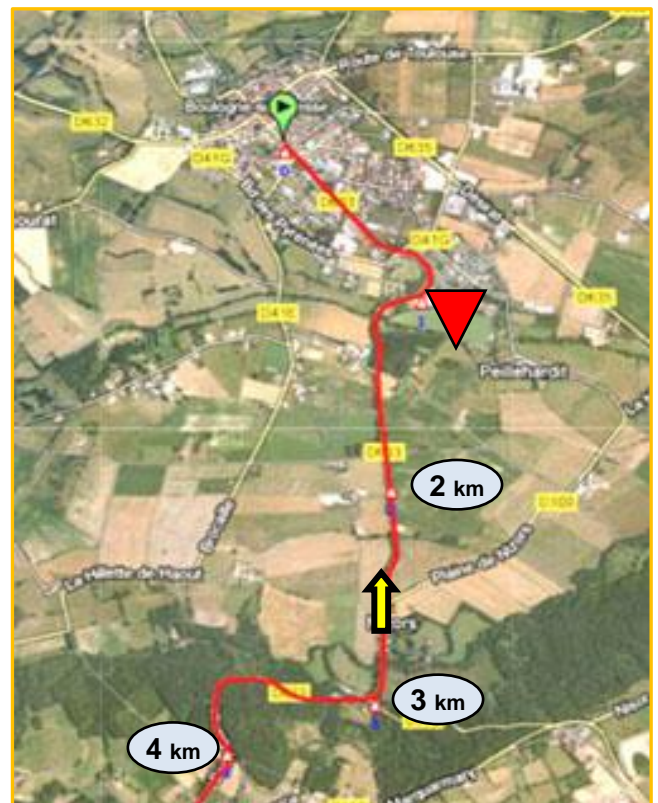
- > Les Cabannes
- > D 522 sur 16 Km
- > Plateau de Beille
- > ARRIVEE

38^{ème} RONDE DE L'ISARD

3^{ème} Etape Samedi 23 Mai 2015

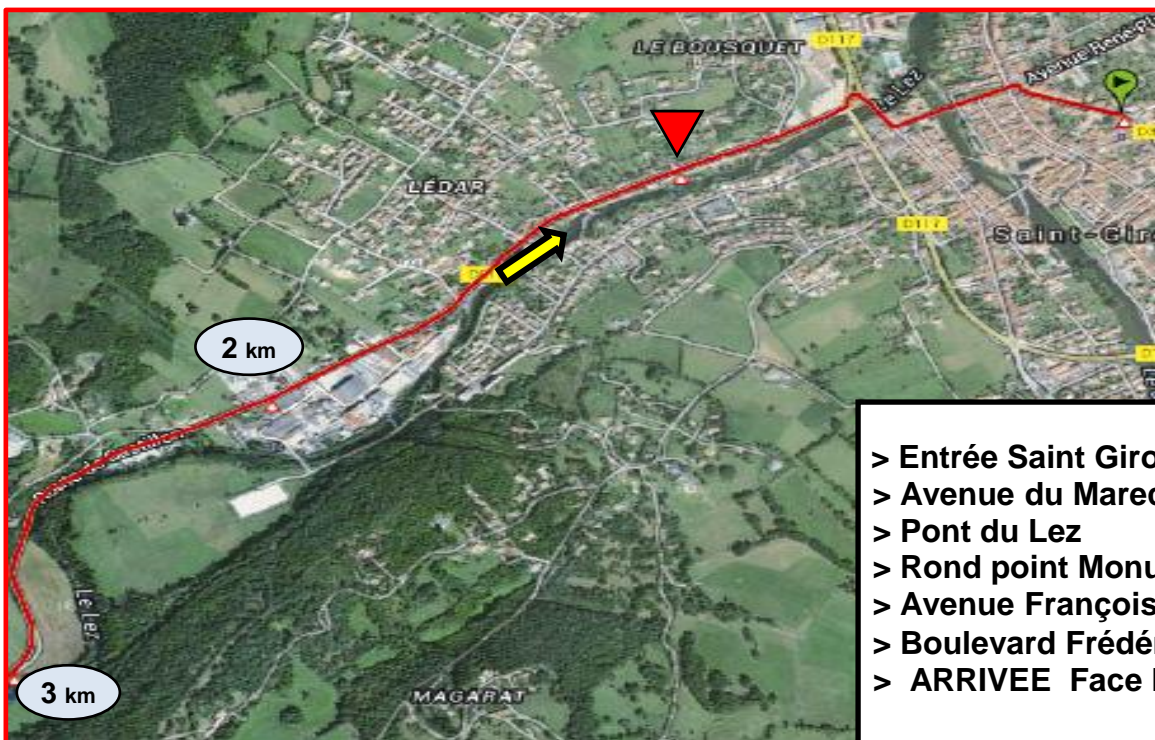
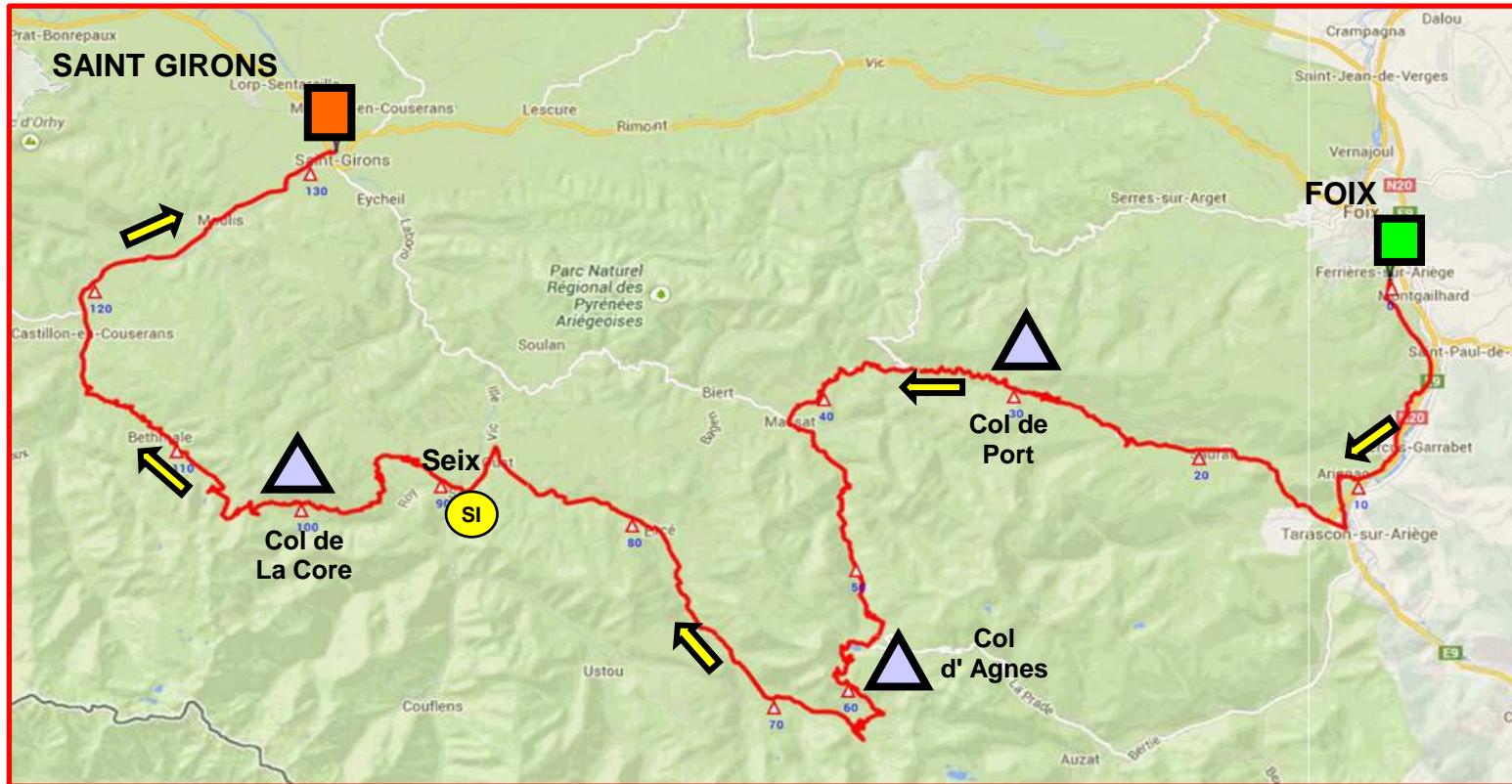


- > Entrée Boulogne sur Gesse
- > D 633
- > Avenue Charles Suran
- > Place de la Promenade
- > ARRIVEE



38 ème RONDE DE L'ISARD

4 ème Etape Dimanche 24 Mai 2015



- > Entrée Saint Girons D618
- > Avenue du Marechal Foch
- > Pont du Lez
- > Rond point Monument
- > Avenue François Camel
- > Boulevard Frédéric Arnaud
- > ARRIVEE Face N° 43

